



TURBO AFTERMARKET Service Bulletin

New Retrofit Actuator for Ford V2S and HP Turbos

This bulletin outlines the introduction and service procedure of the new BorgWarner CBA (Compact Brushless Actuator) assembly, part number **59001107387**.

The original SRA (Smart Remote Actuator) Assembly, part number **476840** for the Ford 6.4 liter Powerstroke V2S turbo systems sold between 2008 and 2010 has been discontinued. The new retrofit actuator that fits into the same packaging and is identical in performance as the original actuator.

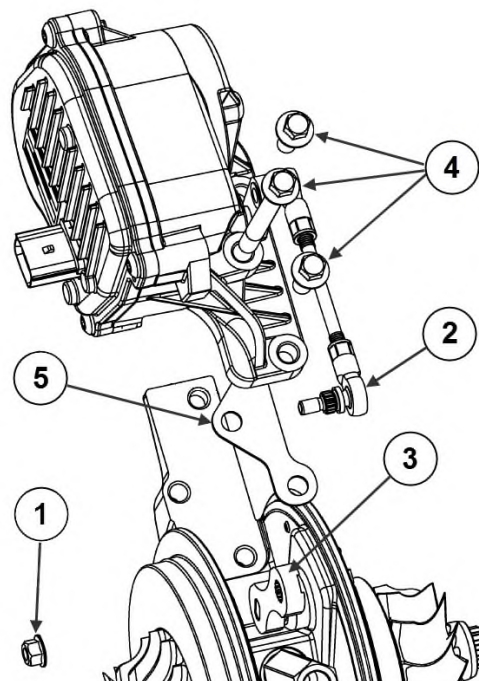
Retrofit Actuator Assembly

The new Retrofit Actuator Assembly consists of a BorgWarner CBA (Compact Brushless Actuator) with linkage, new actuator bracket, thermal spacer and mounting hardware. Installation of the Retrofit Actuator Assembly to the turbo requires removal of the original SRA Assembly and the specific installation sequence listed below.

Original SRA Assembly Removal

See Figure 1

1. Remove M6 nut (1) and separate linkage (2) from dog-bone (3)
2. Disconnect two coolant hoses from SRA
3. Disconnect electrical connector from SRA
4. Remove three M8 bolts (4)
5. Remove SRA Assembly and thermal spacer (5) from turbocharger
6. Properly discard SRA Assembly and hardware



February 12, 2018 | S-02-18

Before installing the Retrofit Actuator Assembly:

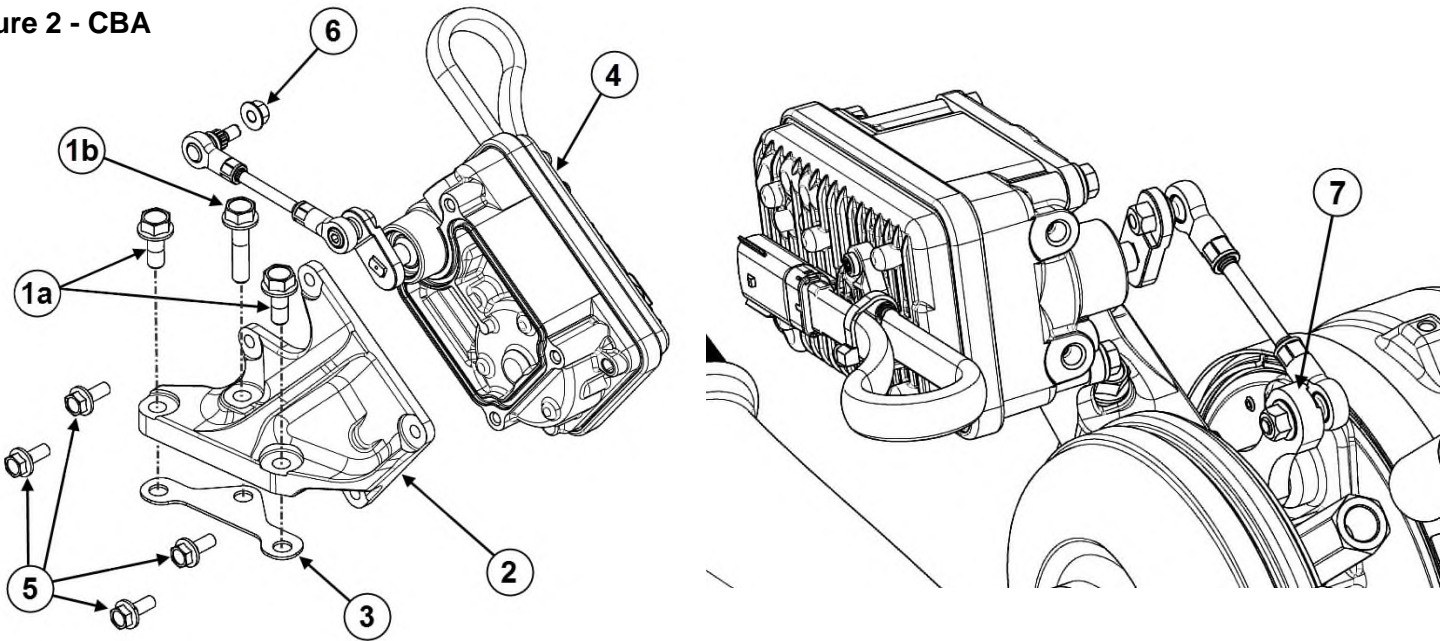
1. Rotate the dog-bone by hand to ensure the VTG mechanism moves freely
2. Ensure the mounting surfaces and threads are clean and free of debris

Retrofit Actuator Assembly Installation

See Figure 2

1. Mount the thermal spacer (3) and Actuator bracket (2) to the turbocharger bearing housing using the supplied M8 bolts (1a,1b), ensuring proper orientation of thermal spacer. Torque the three M8 bolts to 19±1 Nm.
2. Insert Actuator linkage end into dog-bone (7) and loosely secure with M6 nut (6) by hand
3. Install Actuator assembly (4) to bracket (2) using the four supplied M6 bolts (5) and tighten to 13.5±1.1 Nm
4. Tighten M6 nut (6) to 10.5±0.3 Nm

Figure 2 - CBA



Item #	Description	Qty
1a	Flange Head Bolt - M8 x 20mm	2
1b	Flange Head Bolt - M8 x 35mm	1
2	Actuator bracket	1
3	Thermal spacer	1
4	Actuator assembly	1
5	Flange Head Bolt - M6 x 16	4
6	Nut - M6	1

Please refer to BorgWarner Turbo Aftermarket **Service Bulletin S-03-17** for the coolant line re-routing procedures.